

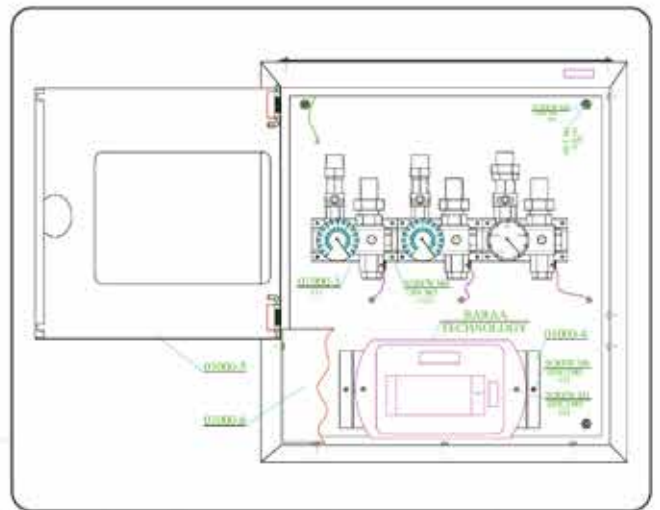
ZONE SERVICE UNITS

Description:

Zone Control and Alarm Units are located in some distribution points, and are used for controlling gas flows in specified zones. Zone Control and Alarm Units indicate pipeline pressure case and optional use lcd alarm isolation of the zone. 1,2,3,4 and 5 gas options are available.



Characteristic Features: It can be designed in many different types. Usually alarm system is installed on the main unit and becomes more useful. In some applications, color touch screen digital alarm system can be mounted on some other points by the cables. If distribution line is too long, then pressure is needed to be increased on central gas plant output. It may cause high pressure points where is close to central gas plants, in this case; second stage pressure regulator should be installed.



ZONE SERVICE UNITS

If there is a second stage pressure regulator on the control unit, it usually is called as Regional, Gas Control Unit. Zone Control and Alarm Unit has 2 installation types which are over plaster and under plaster. Front cover and locking systems prevent unauthorized

interventions. There should be an emergency intervention system on the panel. In this way, in case of emergency; cover can be opened and breakable glass should allow for rapid intervention.



Areas of use: Zone Control Units are installed in medical gas pipeline systems and zone or regional distribution points.

ZONE SERVICE UNITS



Description : Zone control Units provide opening and closure of gas lines, warns when the pressure goes out of set range . Setting option allows you to set pressure range values very easily. Units can be installed as surface mount or flush mount.

Technical Specifications:

Product Code : BAR-VBOX X-Y X:1,2,3,4,5 Y: SU(Surface mount), F (Flush mount)
 Product name : Zone Control and Alarm Unit
 Gas Equipment : 1-5 Gases (Can be designed according to the project)
 Power Supply : 220 V 50 Hz

MODEL	BAR-VBOX1	BAR-VBOX2	BAR-VBOX3	BAR-VBOX4	BAR-VBOX5
Width(cm) A	43	43	43	60	60
Height (cm) B	10	10	10	10	10
Length (cm) C	40	40	40	40	40

GAS (REGIONAL) CONTROL UNITS

Introduction : Zone control Units provide opening and closure of gas lines with emergency socket for each gas . warns when the pressure goes out of set ranges. There are pressure regulators and by-pass system in the unit. indicate pressures case normal or out setting pressure and optional use lcd alarm isolation of the zone . you can set pressure range values very easily.. Units can be installed as surface mount or flush mount.

Technical Specifications:

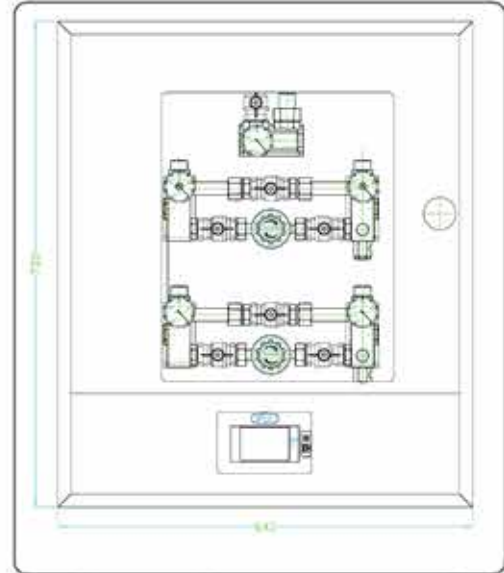
Product Code : BAR-RBOX X-Y X:1,2,3,4,5

Y:SU (Surface mount), F (Flush mount)

Prdoduct name : Gas (Regional) Control and Alarm Unit

Gas Equipment : 1- 5 Gases (can be designed according to the project)

Power Supply : 220 V 50 Hz



MODEL	BAR-VBOX1	BAR-VBOX2	BAR-VBOX3	BAR-VBOX4	BAR-VBOX5
Width(cm) A	43	43	60	75	90
Height (cm) B	10	10	10	10	10
Length (cm) C	40	40	40	40	40



MEDICAL GAS ALARM

We are a technology company, producing and doing Research & Development in the fields of electronics, medical and industrial control systems.

The basic principle of our company is to provide the best solutions to different projects with low cost – high performance criteria and advanced technology employment. Design and manufacturing takes place after a thorough product and cost research that enables users to control and use equipment; international

standards are followed and quality electronic and mechanical materials are featured with the lowest cost possible.

Our vision is to use high-tech medical and industrial electronic systems in order to reduce foreign dependency of our country, become the pioneer in creating and deploying design and software standards in electronic design and electronics manufacturing, stay up-to-date with our field of activity in terms of technology, and actualize previously unfulfilled projects in the circuit.





BARTECH ALARM LCD

BARTECH ALARM LCD

is medical gas alarm device

Featuring pressure switches. It can be used in all pressure and

vacuum system including medical gases and medical air. It can use with

both low and high pressure inputs. Can be used for up to 5 gases. Unused gases can be switched off. Both types

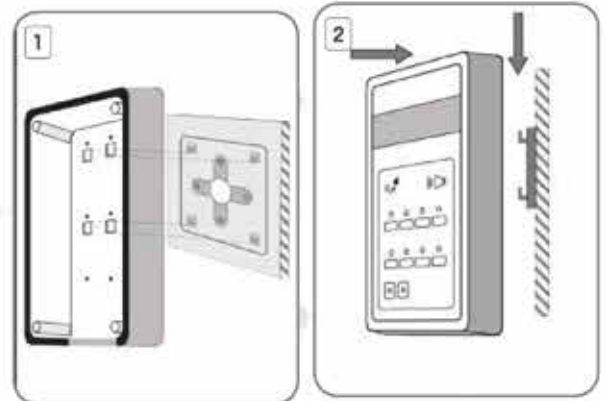
of pressure switches (normally closed / normally open) are available.

general alarm relay output for projects not containing a central automation system. It is a completely microprocessor controlled

device for applications that don't require digital tracking of gas pressure, but only low and high-pressure tracking.



- Tracking of up to 5 gas and/or vacuum lines
- Easy closure of unused gases
- Can be mounted to walls and boards
- Alarm silence and indicator test buttons
- Lcd display
- Remotely visible red alarm LED for each channel
- microprocessor controls
- Low-cost and efficiency



BARTECH ALARM TSC

BARTECH ALARM TSC

Digital alarm device reads pressure values with wide color touch screen that displays different gases readings and the operating states of each gas and also the operating state of the device as a whole . The device can use for eight gases (1:8 lines) ,the device can measure O2 purity option . Device displays data on the touch screen, it's also provided with NO/NC relay and RS socket to connect with PC computer .

Device monitors and gives alarm on high and low values of pressure where user can set the upper limit and lower limit for every gas separately through the screen by pressing on gas location on screen then entering the password .

Device uses for area alarm continuously that monitors the gas alarm condition in pipeline at area or zones and local alarm continuously that monitors specific alarm condition locally at piece of source equipment.



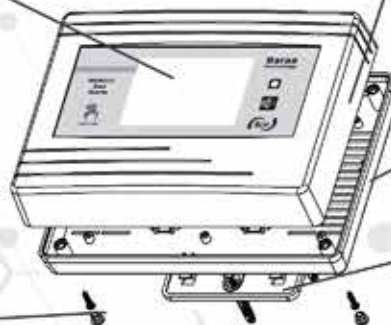
1- COLOR TOUCH SCREEN

2- FRONT PANEL

3- BACK PANEL WITH BOARD

4- INSTALL SET

5- FIXING SCREW





BARTECH ALARM TSC

Device displays different gases, each gas in its location on the screen where it displays the gas name ,reading value , pressure state (low/high/normal) with states colors - green in normal case - dark red in high pressure case - heavy red in low pressure case Screen has condition statues that appears "okay" when everything is normal "alarm" when there is pressure fault "mute" when mute press during alarm

- TTL SERIAL LCD color screen
- 480 x320 pixel resolution touch screen
- Tracking of up to 10 gas and/or vacuum lines
- Data transfer via RS – MODBUS
- Easy-to-use menu screen
- Remotely visible red alarm icon for each channel on screen
- Bright green icon showing normal operation for each

Channel on screen

- Microprocessor-controlled electronic system

